

Recycling Einheit

ERMANNO BALZI

Recycling Unit

S2154/ . . .

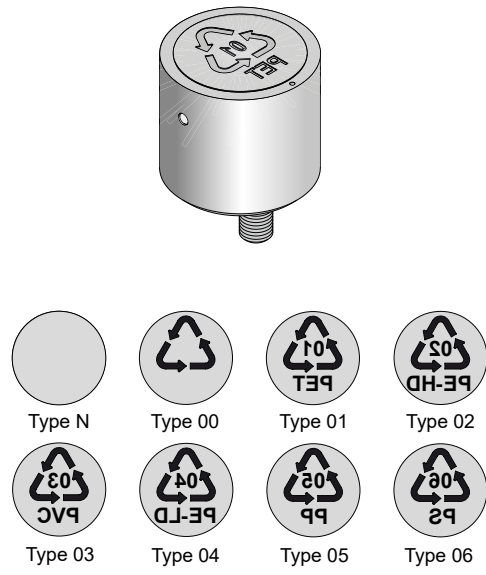
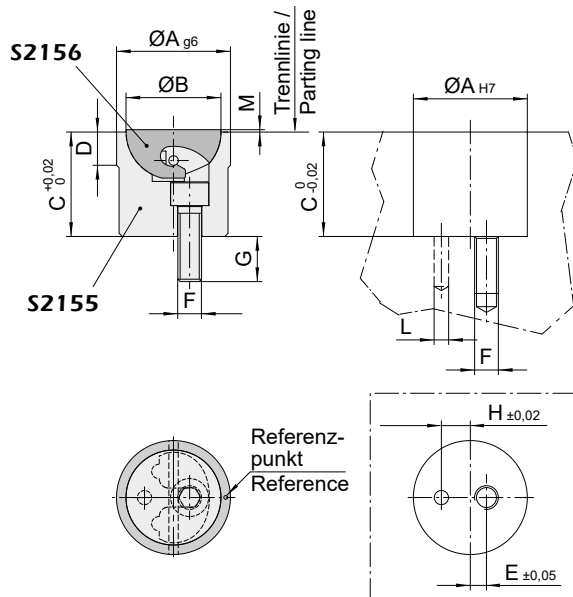
Mat.: 1.4021 / 50 - 52 HRC

Eigenschaften:

- Ein- und Ausbau frontseitig.
- Schnellwechsel der Einsätze.
- Einsätze mit Sondergravuren auf Anfrage.

Characteristics:

- Front-assembly and removal system.
- Quick insert change.
- Custom engravings on demand.



B	C	D	E	F	G	H	L	M	A	Type	Best. Nr. / Order No.
12	14	5	2,3	M4	6,5	5	2	0,15	14	N	S2154/ 14xN
										00	S2154/ 14x00
										01 (PET)	S2154/ 14x01
										02 (PE-HD)	S2154/ 14x02
										03 (PVC)	S2154/ 14x03
										04 (PE-LD)	S2154/ 14x04
										05 (PP)	S2154/ 14x05
										06 (PS)	S2154/ 14x06
16	18	6	3	M5	7,5	6,5	2	0,15	18	N	S2154/ 18xN
										00	S2154/ 18x00
										01 (PET)	S2154/ 18x01
										02 (PE-HD)	S2154/ 18x02
										03 (PVC)	S2154/ 18x03
										04 (PE-LD)	S2154/ 18x04
										05 (PP)	S2154/ 18x05
										06 (PS)	S2154/ 18x06
20	22	7,5	3,4	M5	7,5	8	3	0,15	24	N	S2154/ 24xN
										00	S2154/ 24x00
										01 (PET)	S2154/ 24x01
										02 (PE-HD)	S2154/ 24x02
										03 (PVC)	S2154/ 24x03
										04 (PE-LD)	S2154/ 24x04
										05 (PP)	S2154/ 24x05
										06 (PS)	S2154/ 24x06
26	26	7	3	M5	7,5	10	3	0,15	30	N	S2154/ 30xN
										00	S2154/ 30x00
										01 (PET)	S2154/ 30x01
										02 (PE-HD)	S2154/ 30x02
										03 (PVC)	S2154/ 30x03
										04 (PE-LD)	S2154/ 30x04
										05 (PP)	S2154/ 30x05
										06 (PS)	S2154/ 30x06